

THE RECORD

Many Projects, Many Hands, More “to do’s” in 2014! Join us!

In our winter newsletter, we report on activities for the year just ended and look forward to the year to come. We hope that one of your New Year’s Resolutions is to become more involved with us. We have projects for every talent and interest -- and you might have one of your own!



See
Page 3 for
annual meeting
information. After
our business we will
feature a film
interview with
Holocaust Survivor
Helen Farkas.

2013 Activities:

Preservation:

1) Restored damaged 1930s train station waiting bench 2) recorded five oral histories and collaborated with library on six Living History digital film vignettes (now available in library and online); 3) purchased new larger capacity computer for digital cataloguing; 4) catalogued hundreds of new acquisitions; 5) Held *Paint Burlingame* event

Research:

1) Identified Burlingame’s war memorials and recorded the names of approx. 40 Burlingame men and women who lost their lives in military conflicts; 2) began a count of Burlingame homes built prior to 1913 (count so far: 703 or 10 percent of our housing stock); 3) began to collate and supplement our archive collection on schools; 4) responded to scores of community inquiries.

Education:

1) Created and funded 13 historical bronze plaques for Burlingame Avenue; 2) created displays for McKinley’s Centennial and Caltrain’s Sesquicentennial; 3) Participated in SMC History Association’s Victorian Day Walking Tours; 4) Presentations for SMCHA’s Docket Talk and Rotary Club; 5) conducted third-grade Passport tours and several scout tours; 6) sponsored three *free* presentations by: Lee Mendelson, local producer of Charlie Brown Christmas, M. Lombardi on Eichler homes, and actors presenting Living Histories of A.P. Giannini and Ethel Crocker.

New Acquisitions

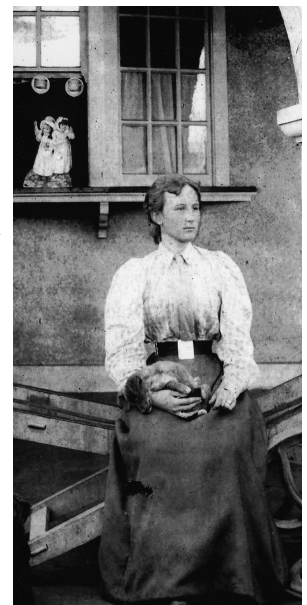


Thanks to: **Eric Day**, grandson of **Adele Dessin**, wife of **Harry Dessin**, (Burlingame pioneer) for a collection of reproductions made from glass slides of various Burlingame and Peninsula scenes, in particular the early Dodge dealer on Lorton Avenue, site of current Il Fornaio restaurant, (see photo at right.); **Kathy Berryman Woolard** (Mrs. Frank H. Woolard) for cartons of Hoover and Burlingame High School memorabilia belonging to her mother, Katie Williams, daughter of George W. Williams of Williams & Burrows, Inc.; **Jim Kelly** for a collection of directories entitled "Senior Citizens Organizations of Burlingame," various years from 1994-2000, for Our Lady of Angels

Parish Directory, 1969 and an OLA Golden Jubilee Commemorative Souvenir Book of Church History, 1926-1976; **Terry Naylor** for a framed large photo-poster of the BHS class of 1959, with identifying names; the **Smith** family for a copy of the booklet entitled "Burlingame, California 50th Golden Anniversary - A Short Journey Into History 1908-1958"; **Pete Garrison** for photo reproductions of 15 icons he has painted, photographed by **Mark Hundley**, the originals of which are exhibited on woodwork in the Lutheran Church of the Good Shepherd, 301 Burlingame Avenue; **Janet Benson Martin** for a piece of architectural frieze from the demolition of the Fox theatre in 1978, and a 1974 layout and description of 'Trees of Washington Park', illustrated by S. Dolim and approved by Park Superintendent J. Hoffman; **Roger Oser** for the Towle's Seafood Café sign (altered from original Towle's Fountain sign) found on his roof, and **Mike Gaul** for safely retrieving it so it can become part of our collection of old signs; **Mike McQueen** for a vintage notebook containing the 1940s-1950s hourly wages of all employees of the Burlingame Advance newspaper (Mike's father, George, took over the newspaper in the mid-1930s); **Bill Reilly and John Parkin** for a set of circa 1989 aerial photos of the City of Burlingame and Town of Hillsborough, originating from the EOC (Emergency Operations Center); **Corinne Hitchcock** for a 1915 seal press of the First Church of Christ Scientist at 1449 Oak Grove, in 2013 Inglesia di Cristo; and **Pat Harding and Brad McCulley** of the Burlingame Library for a complete set and several misc. Burlingame, and San Mateo-Hillsborough City directories, 1918-1980.

Memories of Estelle Gates, wife of early train station master George Gates, recorded by her son Stan in 1958 for the city's 50th anniversary:

[Around 1900], across El Camino (we called it the County Road then), opposite the current Burlingame Safeway store, there was a dairy farm called Palace Hotel Dairy, and it was run by John Casey . . . And in the other direction [from the Gates' apartment within the train station] Dad and I frequently used to take walks down to the bay for picnics and a swim and we always stopped in to say hello to the McLellans who owned a large piece of land on the south side of Burlingame Avenue where they raised flowers for the San Francisco market . . . we were very happy in our station home until Dad bought land on Burlingame Avenue and built us a house. We were happy and healthy too--in fact, we had to keep healthy because the nearest doctor lived in Redwood City. When we needed him we had to telegraph to the Southern Pacific depot in Redwood City and then he came by train or by horse and buggy. We went a little fancy when Cliff was born -- we had a Doctor Stinson come down by horse and buggy from San Francisco to bring him into the world. He was born in the station. You and Bob were born in the house -- it stands now on Donnelly Avenue. (*The Gates' home was recently damaged by fire. Check out our new exhibit on the home in the Burlingame Hillsborough History Museum*).



An Afternoon with Helen Farkas-

Burlingame resident and Auschwitz survivor **Helen Farkas** is the author of "Remember the Holocaust." A frequent speaker on her experience, she usually ends her talks with "respond to hate with love. That is the only thing that works." Mercy High School in San Francisco has opened the Helen and Joe Farkas Center for the

**Sunday, Feb. 23, 2014**

Study of the Holocaust in Catholic Schools. We are honored to have captured Helen's story on film as part of the Living History Project, jointly sponsored with the Burlingame library. After the film, Helen will be available to answer questions.

Sunday, Feb. 23 at 2 p.m. in the Lane Room of the Public Library. Please join us!

Many thanks to: Kristof Froehlich for creating a wood jig to help repair a vintage 1930s station bench that was storm damaged when the roof leaked, and the amazing veneer repair of the same by **Debbie and Don Doyle**. We are elated to have our historic bench looking as if it had never been damaged. **Russ Cohen** has been arranging a collection of our vintage signs in the baggage room of the station. Take a look as you walk by. We'd also like to acknowledge the very generous monetary donations from **Sally and Jim Meakin, John and Diane Geer, and Ed and Patti Fichtner**. These substantial donations help to fund many of our community activities and keep our society on the map. Additionally, a special thank you to **Edward Eisenman** who has been collecting printed matter and other artifacts and giving them to us for many, many years. In particular, he has assembled an ongoing collection of Burlingame real estate advertisements with photos and other information that researchers will be able to use when examining changes to our homes and neighborhoods many years from now. It was a similar collection of real estate photos, rescued by our society long ago, that we use for nearly every project on which we work, and that no other institution has, that makes these so incredibly valuable. Kudos are in order for **Bobbi Benson**, who over the past few years has managed to patiently transcribe nearly every single oral history cassette and DVD in our collection from the 1969 to the present.

In Memoriam: Frank Bert Firpo Jr. - longtime BHS teacher and coach
- Charles "Chuck" Mink - longtime BHS teacher and Planning Commissioner

Welcome New Members:

James Shypertt - Individual
 Will Glass - Individual
 Charlotte McFadden - Life
 Sally Meakin - Upgrade to Benefactor Life

**It's
 time to renew
 your membership!**
**Look on your mailing
 label for your current
 membership level.**
**(Life memberships
 are for one
 person)**

OUR ANNUAL MEETING, including election of officers, will take place **Sunday, February 23rd at 2 p.m. in the Lane Room,** immediately preceding our interview with Helen Farkas (see above).

The Nominating Committee consisting of Cathy Foxhoven, Mary Packard and Diane Silven met with the Board's approval in November 2013 to suggest **the following proposed slate of executive officers for 2014:** President - Jen Pfaff; VP Museum - Russ Cohen; VP Membership - Diane Condon-Wirgler; Treasurer - Cathy Baylock; Secretary - Rosalie McCloud. Nominations will also be taken from the floor. If you are interested in a position on the board in the future please contact Cathy Foxhoven.

Student/Senior - \$20

Sole Proprietor - \$100

Individual - \$35

Corporation - \$250

Lifetime - \$250 (one-time payment)

Benefactor Lifetime (business or individual) - \$1,000 one-time payment

Address Service Requested - Time Dated Material

Calendar

Annual and Quarterly Meeting

Interview with Helen Farkas

Sunday, February 23

2 p.m. Lane Room, Burl. Library

Museum Open:

Sundays: Feb. 2, March 2,

April 6, May 4

1-4 p.m.

Volunteer to be a docent!

Please call 340-9960 if you can help in this, or any other, way.

*Please remember
us in your will!*

THE BURLINGAME HISTORICAL SOCIETY

WINTER 2014, ISSUE # 137

President's Message



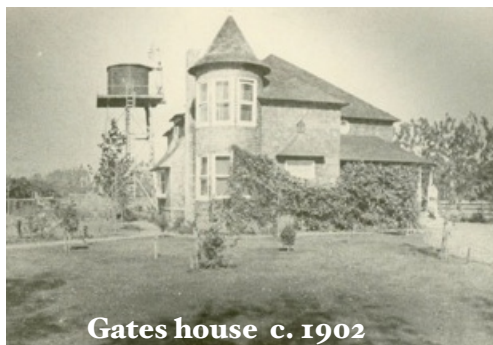
As you can see from our accomplishments, 2013 was another very busy year! We continue to be blessed with a core group of devoted volunteers,

without whom we could not exist. I'd like to express my heartfelt thanks to all of them for literally thousands of hours of help.

Family, pioneers in Burlingame since the late 1890s. Additionally, the 1941 art deco Post Office building on Park Road will likely undergo substantial change of form and function when it is eventually sold on the open market. These events are a reminder that our treasured trees and buildings that have endured and graced Burlingame throughout the decades can disappear, sometimes overnight. It is a message to all of us never to take our community's history for granted, and above all, to stay involved.

- Jennifer Pfaff

Unfortunately, this has also been a trying time with regard to some of our more significant historic resources: The El Camino Real Trees, recently listed in the Register of Historic Places, are threatened by a major Caltrans highway widening project between Bellevue and Oak Grove Aves. In our downtown, a devastating fire in late November badly damaged two vintage homes on Donnelly Avenue--one of them the longtime home of the Gates



Gates house c. 1902

Current Officers 2013:

President - Jennifer Pfaff

VP - Museum

Russ Cohen

VP - Membership and

Education

Diane Condon-

Wirgler

Treasurer - Cathy Baylock

Secretary - Rosalie McCloud

Oral and Living History -

Cathy Foxhoven

Corresponding Secretary -

Mary Packard

Newsletter -

Joanne Garrison