

# Burlingame Historical Society

*Committed to*

**Historical Preservation**

**Research**

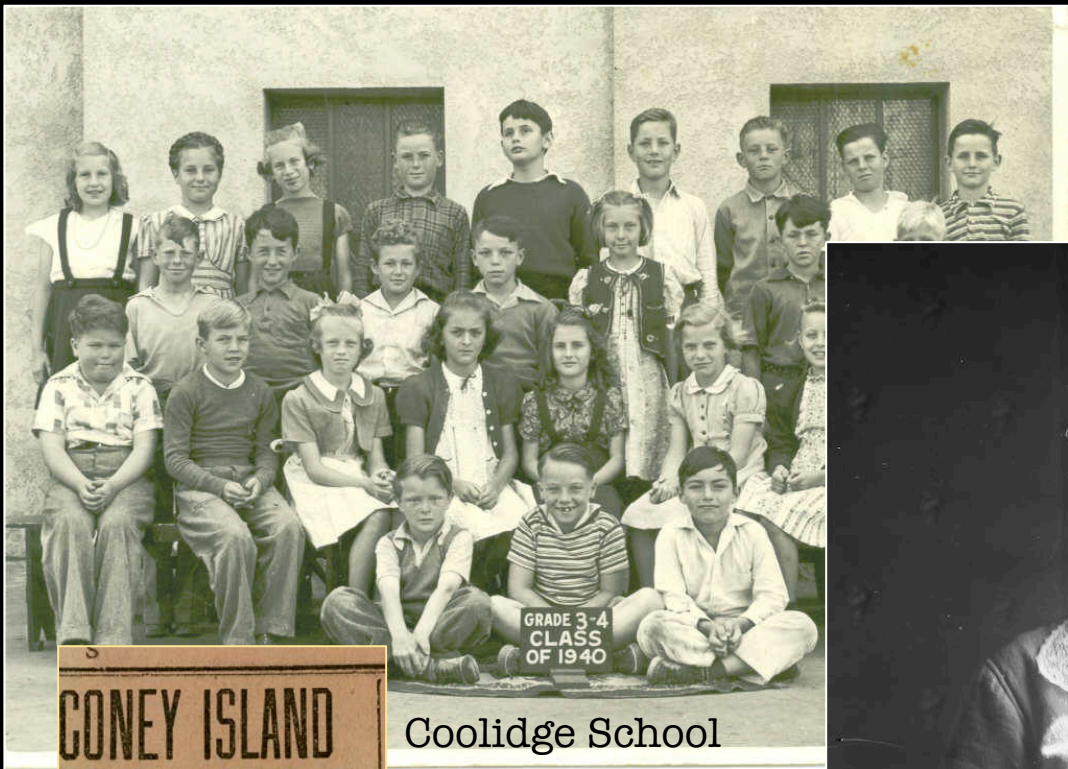
**and Community Education**

**2019**

*Our all -Volunteer workforce  
donates roughly 2000 hours  
annually*



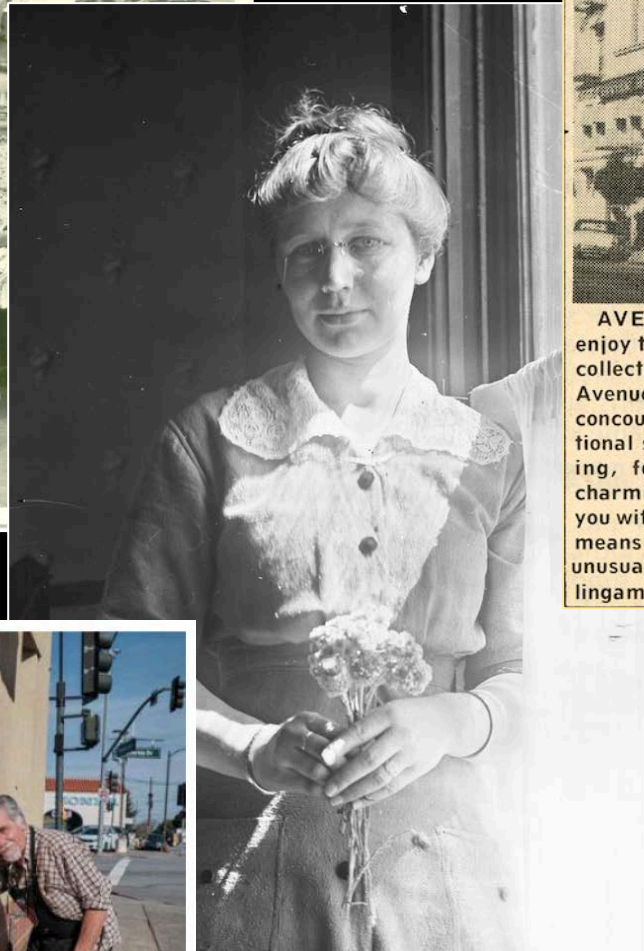
# Historical Preservation



Coolidge School

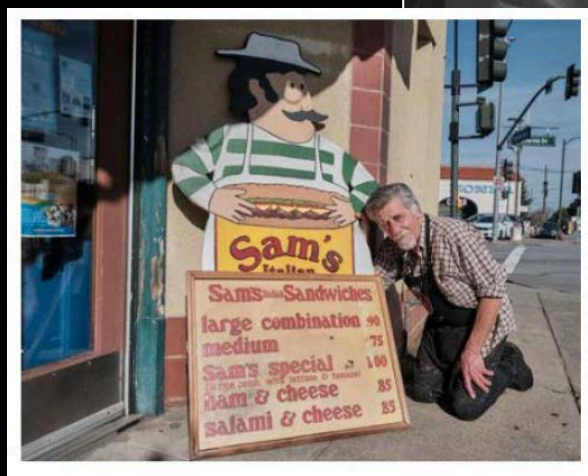


AVENUE ARCADE—Come and enjoy the Peninsula's most notable collection of specialty shops. The Avenue Arcade is a distinctive concourse, featuring an international selection of gifts, art, clothing, food and services. These charming specialty stores provide you with an intriguing, pleasurable means of satisfying your most unusual shopping needs. 1110 Burlingame Ave. 1976

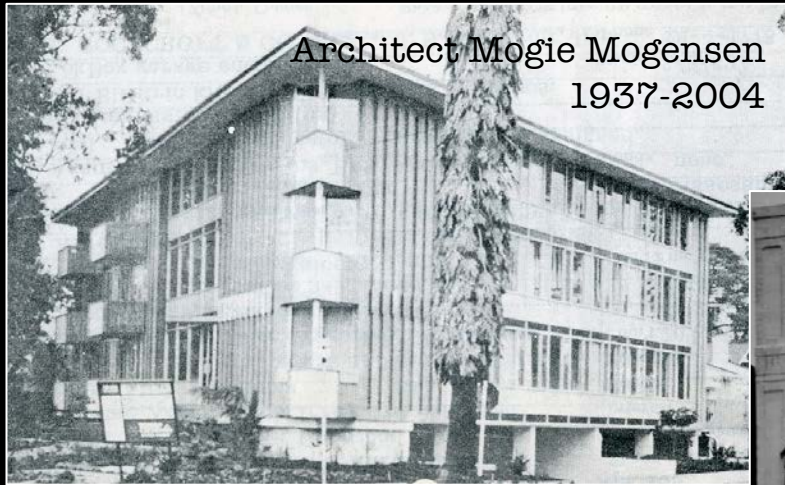


# CONEY ISLAND REPLICA TO BE BUILT ON BAY

Incorporation Papers for Big Amusement Park at Coyote Point Filed  
 3000-FOOT SAND BEACH  
 Resort to Be Known as "Pacific City"; Work to Begin at Once  
 Articles of incorporation filed in



*History Is Now...*



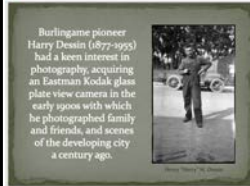
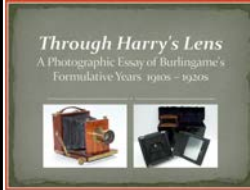
*including  
oral histories*



# Historical Research

*Presentations  
Exhibits  
and Tours*

*Hatch's Alley  
lighted display*



*And 20 years of  
"Passport to History"  
Tours for third graders*

# Community Education

*Museum*

# Burlingame Historical Society

Est. 1975

Be Part of History –

*If you aren't already a member,*

*Join Us!*