

Burlingame by the Bay, continued from page 1

In earlier days, the Bay was both a source of recreation and sustenance. Coyote Point has been a recreation spot for over 100 years. At the same time, the Bay was also a source of sustenance. Fish, shrimp and oysters were all delectables served fresh from the Bay. The marshy shoreline also provided the perfect landing spot for migrating fowl. Duck hunting was a popular activity among early residents who wanted to supplement their families' diets.

However, the respect residents showed the Bay ebbed and flowed. The deposit of raw sewage into the Bay, and the corresponding odors that this produced, prevented Burlingame's bayside amusement park "Pacific City" from ever gaining a lasting presence. The park which had an impressive array of rides and entertainment might have competed with the likes of Santa Cruz's boardwalk but closed within 22 months due, at least in part, to the raw sewage that the city spilled into the bay just north of the park.

During World War II, the bay front was used for military purposes and training. However, after the war, the city apparently decided it needed more land for houses and less water in the Bay, because it allowed the developers of the last remaining estate

in Burlingame, the Mills property, to scrape the hills bare and fill in the Bay. California's population boomed during World War II and many who came never left. Housing was desperately needed in post-war Burlingame and so were jobs. One of the newspaper headlines in 1963 was "We Must Fill Bay to Live." Others weren't so sure. An environmentalist movement started to counter those who wanted to fill in the bay and destroy the habitat of fish and fowl.

(continued on other side)



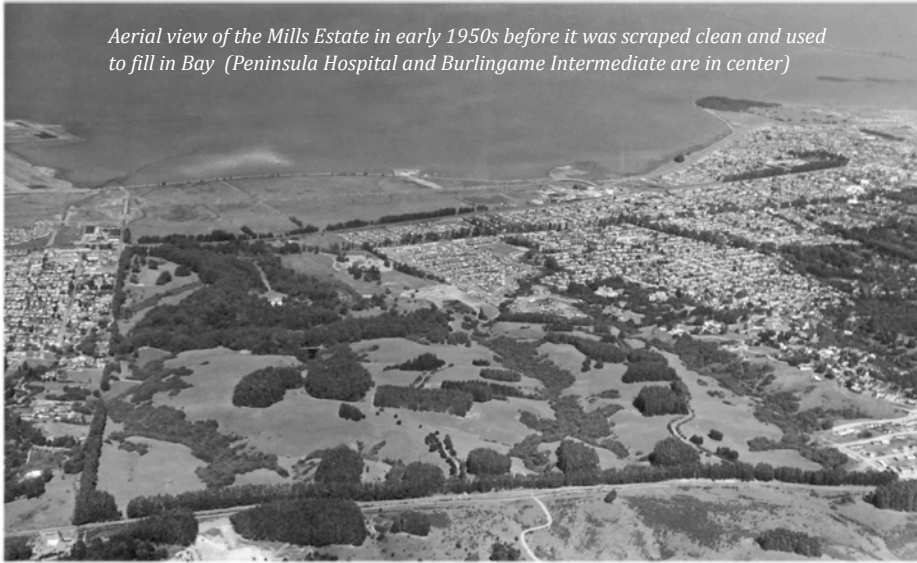
Above left and below: Bathers enjoy Coyote Point around the turn of the 20th century



The Pacific City amusement park at Coyote Point was short-lived due, in part, to the unpleasant odors of raw sewage flowing into the Bay just north of the park



Aerial view of the Mills Estate in early 1950s before it was scraped clean and used to fill in Bay (Peninsula Hospital and Burlingame Intermediate are in center)



For more about the Mills Estate visit: www.burlingamefoundingfamilies.wordpress.com

THE HYATT HOUSE

Some may recall the 1960s iteration of the Hyatt House Motel, designed by J. Richard Shelley, shown below in a period photo from the Chamber of Commerce files. The Burlingame Hyatt was only the second Hyatt ever established in the country. The first Hyatt hotel evolved from a spontaneous “napkin” offer of \$2.2 million in 1957, at Fat Eddie’s coffee shop, inside a hotel at the Los Angeles International Airport. That hotel had been named after the owner, Hyatt von Dehn—The “Hyatt” name stuck.

border. However, it is hard not to conclude with Gary Kamiya that “one of the wonders of the world stands at our front door. This mighty estuary, moving slapping, ebbing, surging, constantly in



Bayfront in 1966

Photo by Norton Pearl

Today, we are beneficiaries of both the developers and the environmentalists. The hotels along Burlingame’s shores provide a different source of sustenance than the fish and fowl once did: Roughly forty percent of the city’s total income comes in the form of a Transit Occupancy Tax charged to hotel guests.

Those who enjoy the Bay Trail and its wildlife and the natural ponds provided by the tidewaters of the Bay can thank the environmentalists that the developers were not successful in paving every portion of Burlingame’s bayfront. The debate will continue as to how we can best utilize, enjoy and honor the bayshore asset we have on our eastern



flux, has shaped more than the design of our cities and parks, our lifestyles, our economy. It has shaped our collective spirit.” Portola certainly had it wrong when he said he did not see “anything worthy of description here.”

For Gary Kamiya’s complete essay see “How the Bay Defines Not Just Our Region But Our Soul,” June 2019, nobhillgazette.com